

System Requirements



System Requirements	OS Windows 10
Processor	AMD Ryzen 7 5800X 8 - Core Processor 3.80GHz
Memory	16 GB RAM
Graphics	NVIDIA GeForce RTX 3080 Ti 12GB
DirectX	Version 11
Hard Disk	SSD 512GB

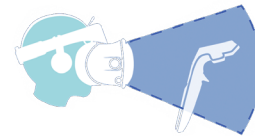
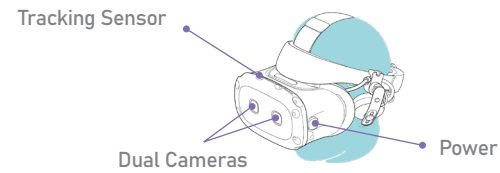


Headset Screen	Dual AMOLED 3.5" diagonal
Graphic resolution	1440X1600 pixels per eye (2880X1600 pixels combined)
Field of view	110 degrees
Connections	Bluetooth, USB-c port for peripherals
VR device sensors	G-sensor, gyroscope, proximity, Infrared ray sensor, tracking sensor

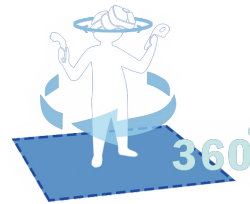


VR Assisted Training for Inspection of Imported Goods

How to use VR DEVICES



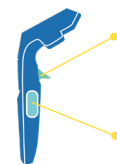
- Lifting the controller to your eye level
- You can see how to use each button



- After wearing the headset on your head, you can rotate your body 360 degrees to secure a view of where you want it



Track pad Front	D-HUB	Container Yard
	Zoom in	the screen Move
Track pad Back	D-HUB	Container Yard
	Zoom out	the screen Move

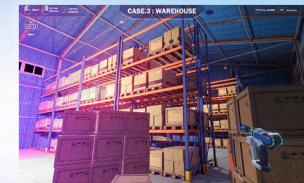


Trigger	D-HUB	Container Yard
	Select an object Drag screen	Select an object
Grip button	D-HUB	Container Yard
	Skip subtitle	On/Off item Skip subtitle



WORLD CUSTOMS ORGANIZATION
ORGANISATION MONDIALE DES DOUANES

Virtual Reality for Customs



VR ASSISTED TRAINING FOR PHYSICAL INSPECTION

- **VR training**
Real-time virtual content rooted on real cases
- **VR mode**
360 degrees, high-quality full 3D experience
- **Screen mode**
Accessible through personal computers

METAVEVERSE PLATFORM CONTENT (June 2022)

- Community platform that enables global Customs training and meetings
- Cross-platform service available on mobile phones and personal computers

INSTALLATION AND DISTRIBUTION

- **Content Development**
Physical inspection / E-Commerce (tbc)
€240,000
- **VR Equipment Installation**
WCO HQ (Nov. 2021) / RTC Korea (Sep. 2021)
€30,000
- **VRT Set Distribution (In Progress)**
27 RTCs / ROCBs
€450,000

Virtual Reality Training funded by CCF-Korea

To help Customs officials learn the basic procedures on how to make a physical inspection of containerized cargo at the maritime port by introducing the VR technology



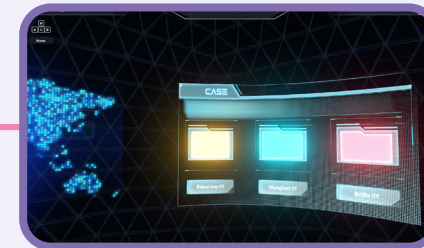
WCO Main Building

Select the WCO building to enter the digital hub



Digital HUB

Receive instruction from Cyber Master



Case Selection

Choose one out of three missions (Drug, Counterfeit, Illegal weapon)



Document Check

Detailed check on address, quantity, weight, price, etc



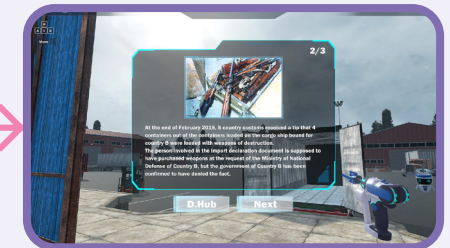
Container Examination

Safety equipment and seal number check, ZBV for X-ray scan



Physical Check

Use tools to detect smuggled items and carry out missions



Review

Evaluation of the session with information on use cases